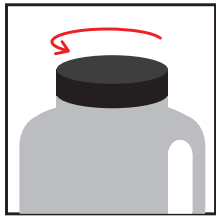


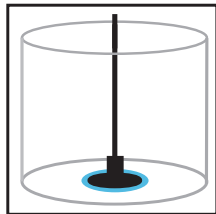
eazicandle

candle making made easy

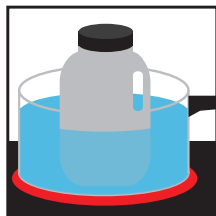
Step by Step Instructions



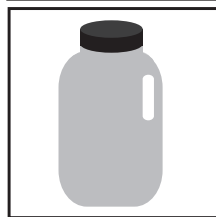
1. Slightly loosen the top of your **eazi candle** (this allows any pressure to escape during heating).



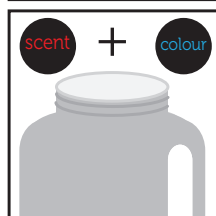
2. Remove paper tab on base of wick sustainer, then stick to centre of your chosen container.



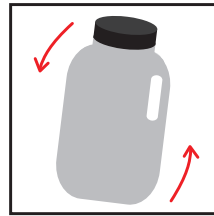
3. Place **eazi candle** in pan of water to a level approx half way up the container, place pan on heat and bring water to simmering.



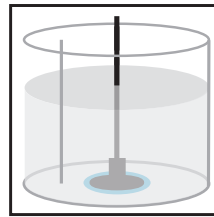
4. Wait till fully melted* then remove **eazi candle** from the pan using the handle - take care this could be hot! (*approx 20 min depending on heat setting)



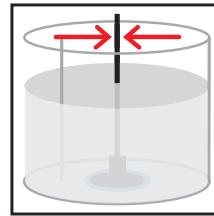
5. Remove lid carefully and add full fragrance bottle and colour if required **separate instructions supplied with colours*



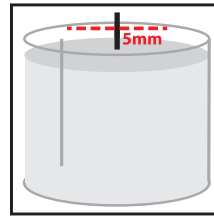
6. Close lid and gently shake bottle to disperse fragrance fully. Allow to stand for approx 3 mins to allow full fragrance absorption.



7. Remove lid and carefully fill your candle container to approximately 75% of height. Return **eazi candle** to pan to keep liquid (don't worry if the wax starts to solidify it will melt easily again)



8. Allow candle to cool till skin starts to form on top and then gently ease wick to centre. (For tips on how to do this visit eazicandle.co.uk) Wait for the candle to set then top up to the finished required height.



9. You are all done! Trim wick to 5mm then allow the candle to stand for a day before burning to allow the candle to cure.

For more Candle Making tips visit www.eazicandle.co.uk

A few Candle Making Tips

Take care as your **eazi candle** when melted will be hot.

Please assess the suitability of your containers for filling.

Children should be supervised by an adult.

When returning your **eazi candle** to a pan make sure lid is secure (to avoid intake of water). **eazi candle** can be reheated at any time following the original instructions.

To centre wick whilst candle setting use a skewer or something similar to lever the wick to the centre.

For best burning...

Never leave a burning candle unattended.

Do not burn candles on or near flammable materials.

Do not place in a draft.

Keep wick trimmed to approximately 1/4 of an inch.

Keep the wax pool free of any debris such as wick trimmings or used matches. Do not put any flammable decorations within the wax.

Candles with a diameter of 3 inches or more should burn over a longer period of time so that the wax becomes liquid up to the edge of the candle.

Burn out of reach of children and pets.

Always burn on a heat proof surface.